

Transferring Applications from PerkinElmer Turbochrom 6.0 to ACD/ChromManager

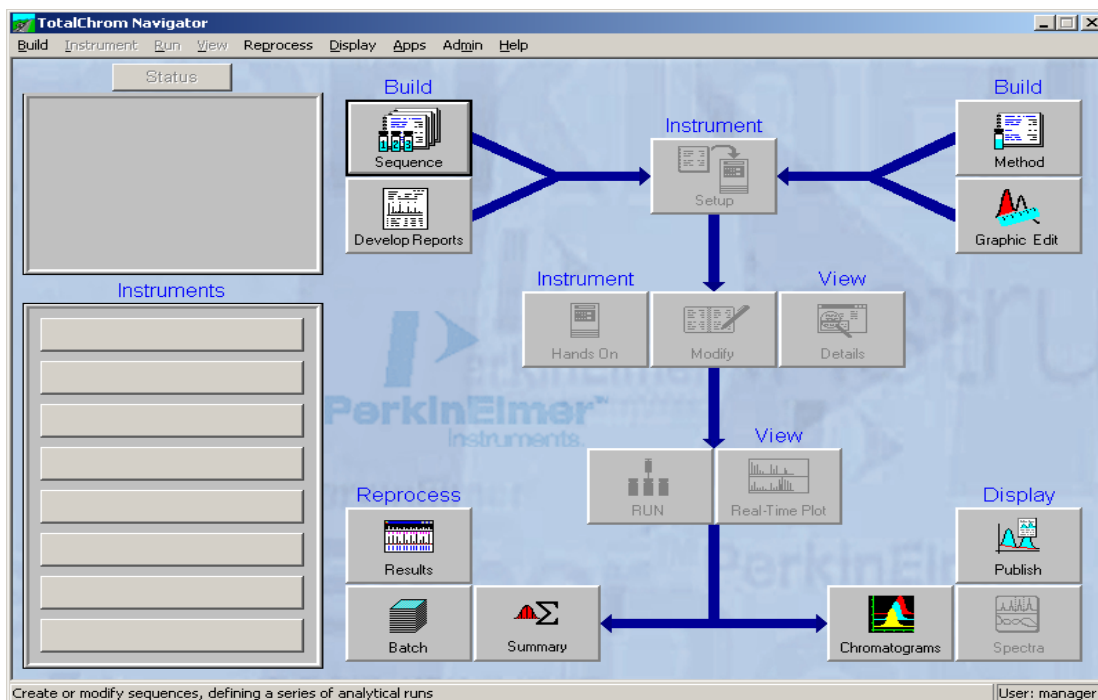
ACD/ChromManager and ACD/ChromProcessor
Version 7.0

Advanced Chemistry Development, Inc.
Toronto, ON, Canada
www.acdlabs.com

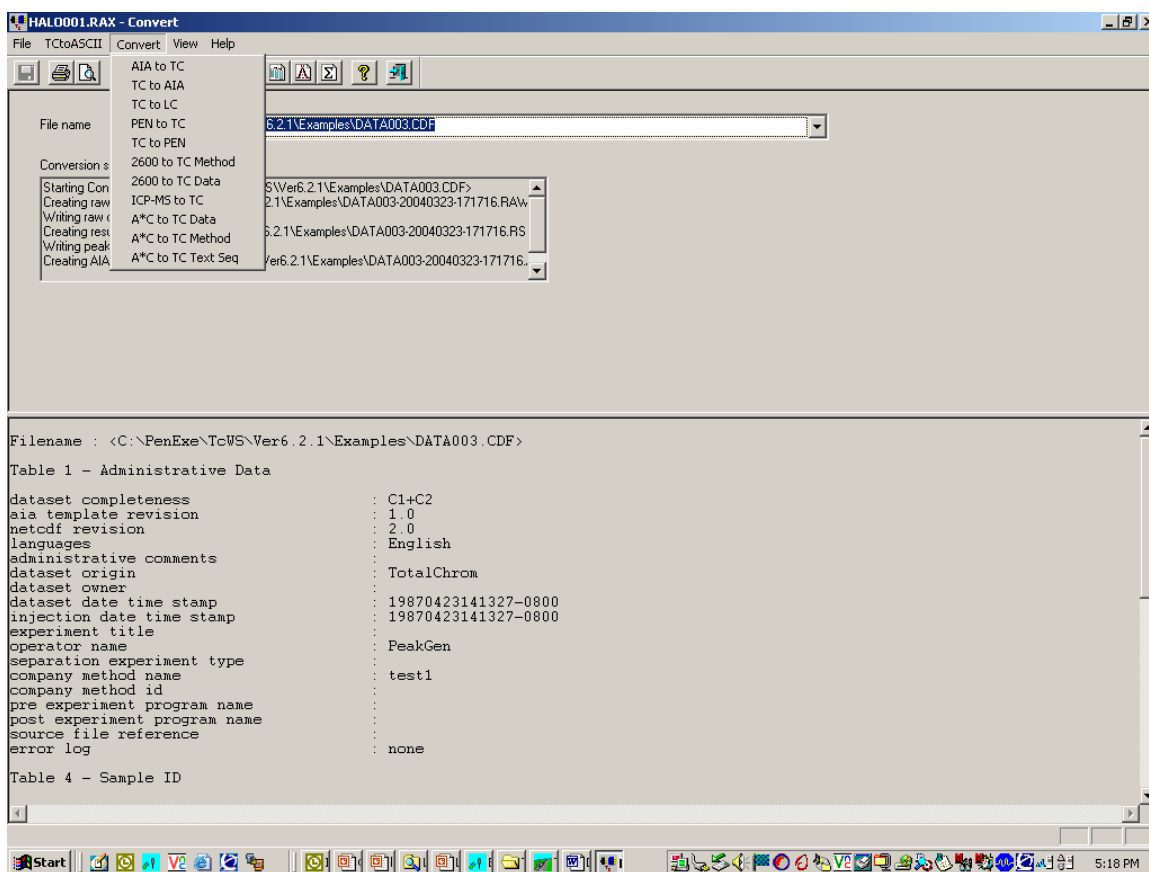
ACD/ChromManager has a “connect to...” utility to allow for the transfer of TotalChrom 6.1 applications directly to the ACD/Labs software. However, even users that have earlier versions of the software can still work inside ChromManager. Transferring one or more applications from PerkinElmer® Turbochrom™ or TotalChrom™ 6.0 to [ACD/ChromManager](#) [1] is relatively simple. Essentially, the Turbochrom files need to be converted to an AIA (NetCDF) format, and then imported to ChromManager.

To Convert Files from Turbochrom

1. From the **Apps** menu, choose **Convert**.



- In the **Convert** dialog box, from the **Convert** menu, choose **TC to AIA**.



- Select and highlight the file of interest, and click **Open**. This will produce a CDF file which will include both results and raw data (the raw file is automatically transferred in when you select the result file). For example, DATA.RST will produce DATA.CDF file in the same directory.
- To import the file(s) to ChromManager, drag and drop the files from Windows Explorer.

Note See also the technical note, [Automated Attachment of Chromatographic Parameters to NetCDF Files](http://www.acdlabs.com/download/technotes/70/chrom/automated_attachment.pdf) [2].

References

- ACD/ChromManager. <http://www.acdlabs.com/chrommanager/>. January 11, 2005.
- Technical Note: *Automated Attachment of Chromatographic Parameters to NetCDF Files*. http://www.acdlabs.com/download/technotes/70/chrom/automated_attachment.pdf. January 11, 2005.