

## Automatic Attachment of Thar Chromatographic Parameters

ACD/ChromManager Version 8.0

Michael McBrien and Robin Martin  
Advanced Chemistry Development, Inc.  
Toronto, ON, Canada  
[www.acdlabs.com](http://www.acdlabs.com)

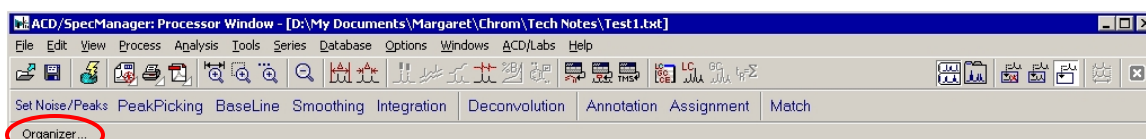
For Chromatography Data Systems that write chromatographic parameters in the appropriate format, it is possible to have ACD/ChromProcessor<sup>1</sup> automatically check for these parameters and attach them to the chromatogram. This will happen every time a new chromatogram of this type is opened in ChromProcessor. This is achieved using a simple macro to attach the file, and setting the macro to run each time a new chromatogram is opened in the software. In other words, every time a new Thar chromatogram is opened in ChromProcessor, the chromatogram parameters will be automatically attached to the chromatogram.

This technical note describes how to create the macro to automatically read method parameters from the instrument file, and attach them to the ChromProcessor \*.esp file.

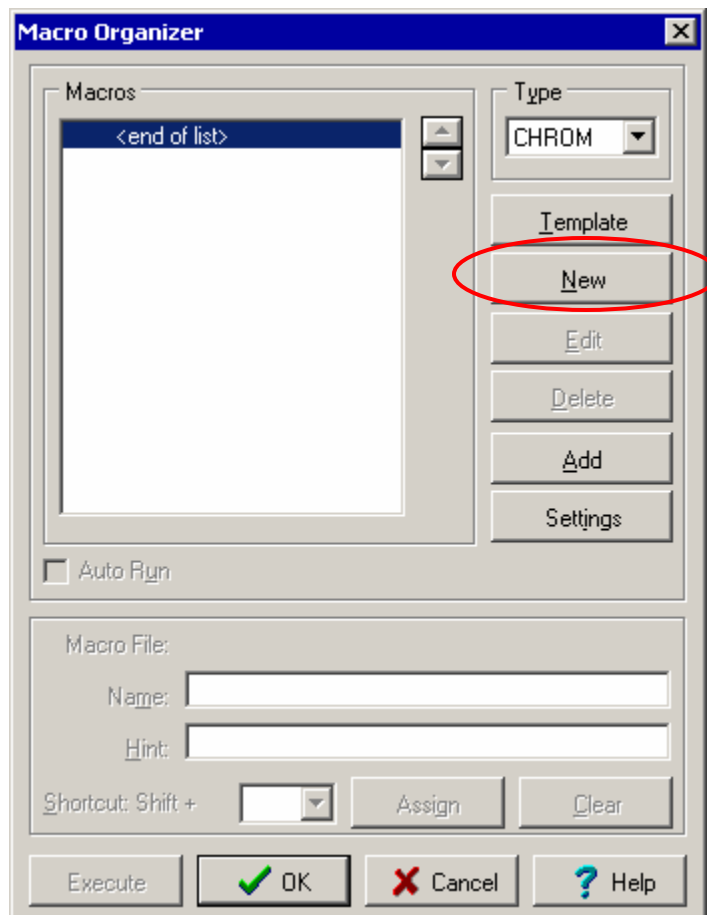
Instrument parameters are saved in a \*.pa file. It is created automatically by Thar Chromatogram Browser, and will have the same name as the chromatogram, which will be stored in a text file. Both the instrument parameter file and the chromatogram text file will be stored in the same directory on your computer.

### Creating the Macro

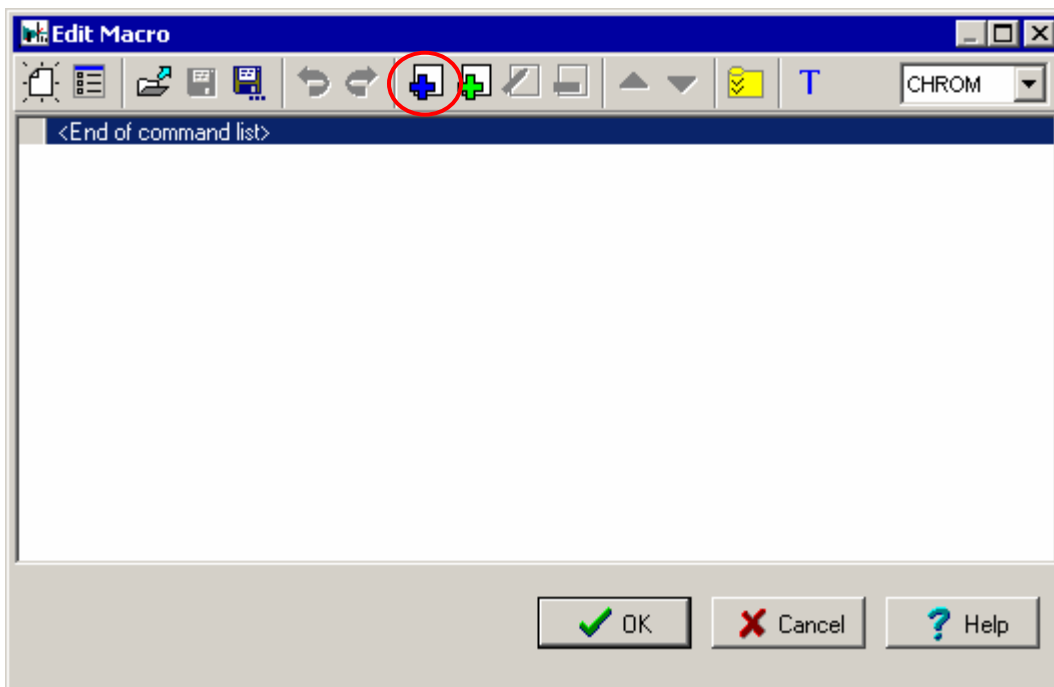
1. On the Macro toolbar, click **Organizer**.



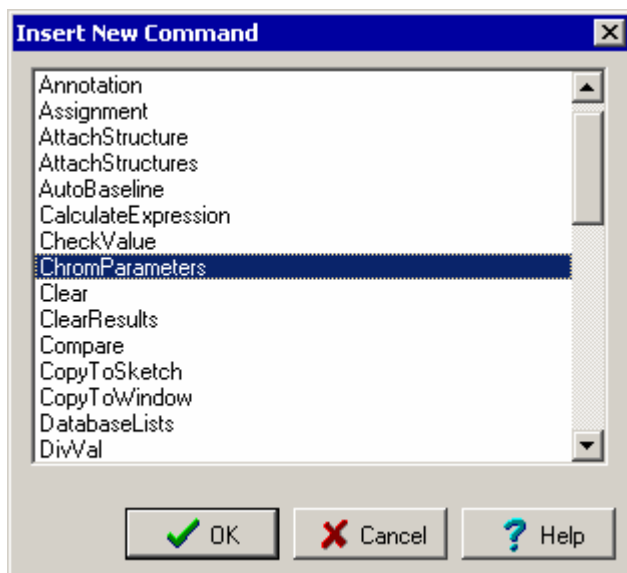
2. The **Macro Organizer** dialog box will appear. Click **New**.



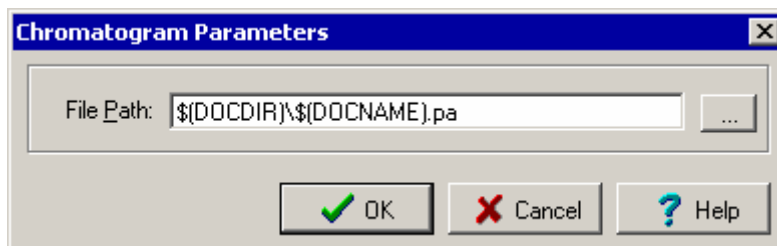
3. The **Edit Macro** dialog box will appear. Click **Insert Macro Command**.



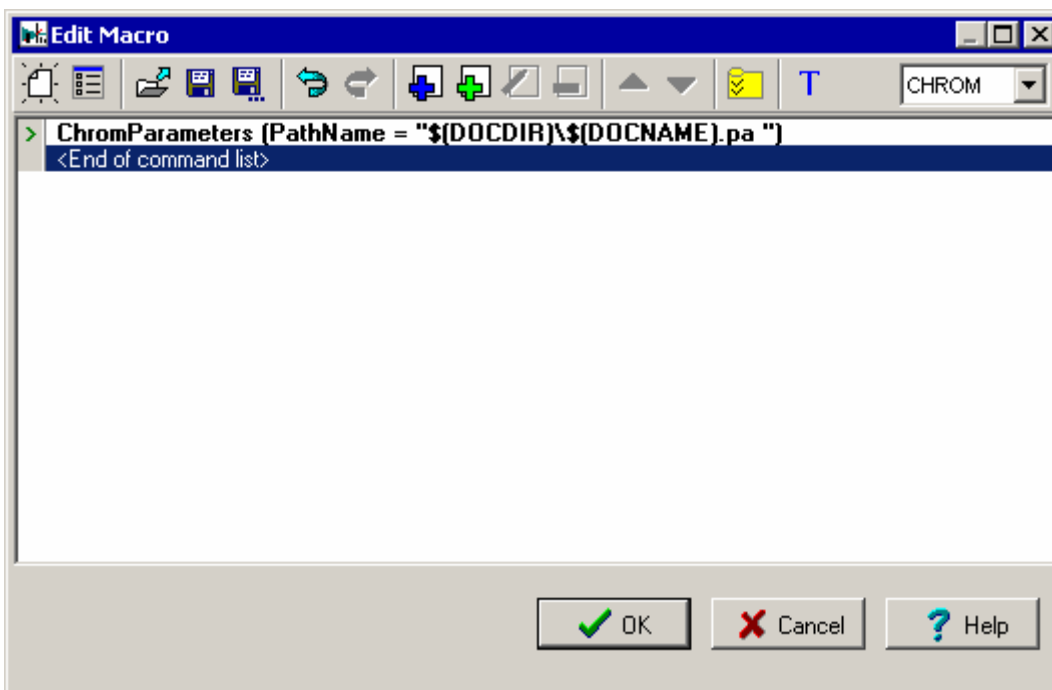
4. The **Insert New Parameters** dialog box will appear. Select **ChromParameters** from the list and click **OK**.



- In the **Chromatogram Parameters** dialog box, type **\$(DOCDIR)\\$(DOCNAME).pa** as the file path for the parameters. This will automatically read the name of the file that was opened, and look for an instrument parameter (\*.pa) file that has the same name.

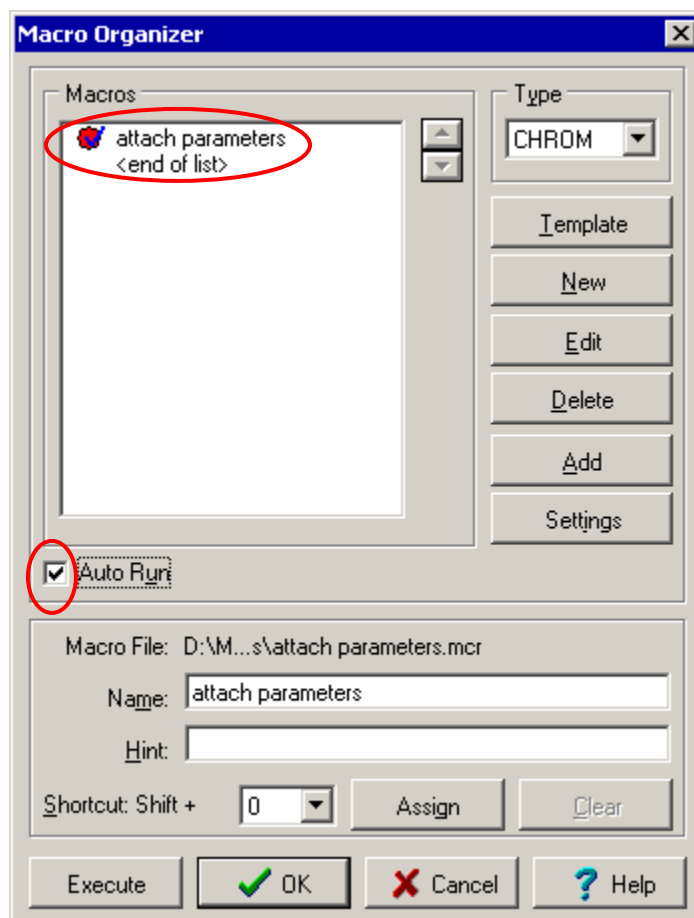


- Click **OK**. The **Edit Macro** dialog box will now look as displayed below; click **OK**

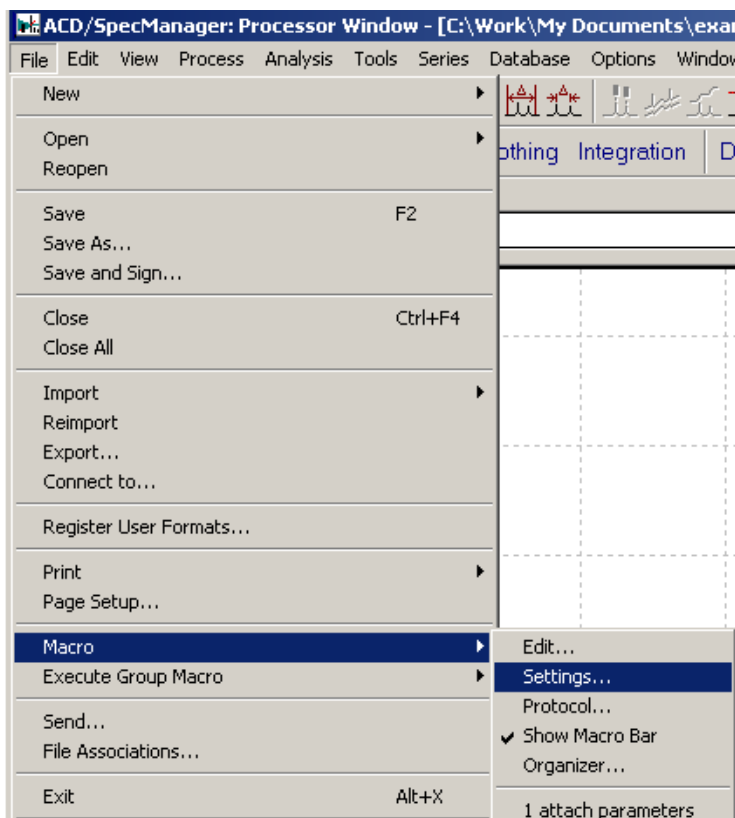


- Save** the macro as "attach parameters.mcr" and click **OK**.

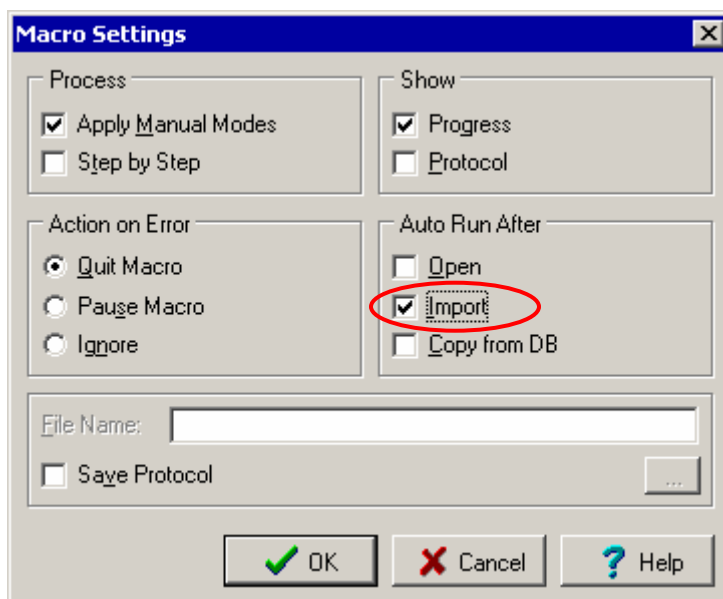
8. The macro can now be configured to run automatically. The name of the macro appears in the **Macro Organizer** dialog box. Select the check box next the macro name, in this case **attach parameters**. Also select the **Autorun** check box. Click **OK**.



9. On the **File** menu, point to **Macro**, and then choose **Settings**.



10. The **Macro Settings** dialog box will appear. Under **Auto Run After**, select the **Import** check box. Click **OK**.



**Note** If you select the **Protocol** check box, the macro will require you to click **OK** after the parameters are attached to the chromatogram. Clearing the check box will attach the parameters without any additional user input.

11. Now that the macro is in place, open a chromatogram in ChromProcessor. (Make sure that both the chromatogram text file and the instrument parameter file are located in the same directory.) Click **Edit/Show Parameters** on the main toolbar to check the attached chromatogram parameters.

**Final Note:** In some cases, due to a setting of the CDS or due to deletion of the parameter files, there will be no \*.pa file available in the directory. If the parameters are not present, the system will simply refuse to attach them, and allow the user to work as usual.

## References

1. ACD/ChromProcessor, Advanced Chemistry Development, Inc. (ACD/Labs), Toronto, ON, Canada. [www.acdlabs.com/chromprocessor/](http://www.acdlabs.com/chromprocessor/) 17 March 2006.